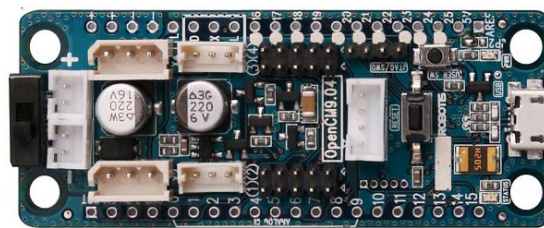


Overview

The OpenCM9.04 is an embedded board based on STMicroelectronics STM32F103CB Cortex-M3 CPU([Datasheet](#)). The board has 26 I/O pins (10 input analog, 8 timer), a pair dedicated 3-pin connectors for Dynamixel XL-series, a pair dedicated 3-pin TTL Dynamixel connectors, a type-B micro USB connector, 2 2-pin connector for lithium polymer (LiPo) batteries, JTAG header, and reset switch.

Also, the OpenCM9.04 is a platform with open-source hardware and software. Based on Processing and Wiring languages the ROBOTIS OpenCM facilitates robot development with ease. ROBOTIS OpenCM is supported in Windows, Linux and MacOS computer platforms.



Notice

- The OpenCM9.04 is not supported by RoboPlus, but supported ROBOTIS OpenCM program.
- The input voltage of the XL-series is 7.4V